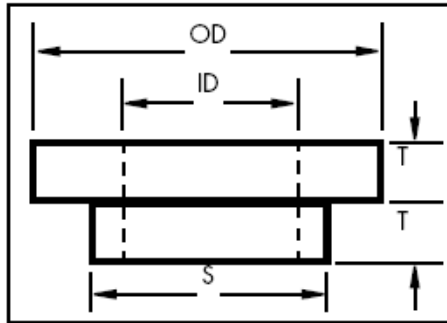


AMTEC CONDUIT RISER

Conduit Rings

Select Conduit Ring Dimension from chart to the right.
Conduit Rings are cast bronze, zinc plated to resist corrosion.



Conduit Ring Dimensions

CONDUIT SIZE	RING NO.				
		O.D.	I.D.	S	T
3/4"	C-3/4"	.94	.62	-	.19
1"	C-1	1.31	.93	-	.19
1-1/4"	C-1-1/4	1.50	1.03	1.31	.16
1-1/2"	C-1-1/2	1.76	1.23	1.52	.16
2"	C-2	2.23	1.55	1.97	.16
2-1/2"	C-2-1/2	2.67	2.05	2.40	.16
3"	C-3	3.20	2.55	2.97	.22
3-1/2"	C-3-1/2	3.80	3.05	3.47	.22
4"	C-4	4.30	3.55	3.94	.22
4-1/2"	C-4-1/2	4.80	4.03	4.45	.22
5"	C-5	5.30	4.46	4.96	.22
6"	C-6	6.30	5.36	5.96	.25

**For Amtec Conduit Riser Grips only
use to determine grip size when multiple cables are held
in a Single Conduit Riser Grip**

For Cables Of Equal Diameters

- Under "Number of cables in one grip," find diameter of your cable in vertical column.
- Read grip size and grip diameter range to the right.
- If your diameter is the maximum of the range shown, go to the next larger size for split grips, stay with the same size for closed grips.
- Example: 3 cables, each with .85 diameter, for a closed grip select the 1.50 - 1.74 range, for a split grip use 1.75 - 1.99.

NUMBER OF EQUAL DIAMETER CABLES IN ONE GRIP							
2	3	4	5	6 and 7	8	9	GRIP DIAM. RANGE
.29-.36 .37-.43 .44-.58	.24-.30 .31-.36 .37-.48	.21-.25 .26-.30 .31-.41	.18-.22 .23-.27 .28-.36	.16-.20 .21-.24 .25-.32	.15-.18 .19-.22 .23-.29	.14-.17 .18-.20 .21-.27	.50-.62 .63-.74 .75-.99
.59-.72 .73-.87 .88-1.01	.49-.60 .61-.72 .73-.85	.42-.51 .52-.61 .62-.71	.37-.45 .46-.54 .55-.63	.33-.40 .41-.48 .49-.56	.30-.36 .37-.43 .44-.51	.28-.34 .35-.40 .41-.47	1.00-1.24 1.25-1.49 1.50-1.74
1.02-1.16 1.17-1.44 1.45-1.73	.86-.96 .97-1.20 1.21-1.45	.72-.81 .82-1.02 1.03-1.22	.64-.72 .73-.90 .91-1.08	.57-.64 .65-.80 .81-.96	.52-.58 .59-.72 .73-.87	.48-.54 .55-.67 .68-.81	1.75-1.99 2.00-2.49 2.50-2.99
1.74-2.02 2.03-2.31	1.46-1.69 1.70-1.93	1.23-1.43 1.44-1.63	1.09-1.26 1.27-1.44	.97-1.11 1.12-1.27	.83-1.01 1.02-1.15	.82-.94 .95-1.08	3.00-3.49 3.50-3.99

CAUTION: NEVER USE GRIPS TO APPROX. BREAKING STRENGTH. REFER TO PAGE "B" FOR SAFETY AND WORKING LOAD FACTORS.